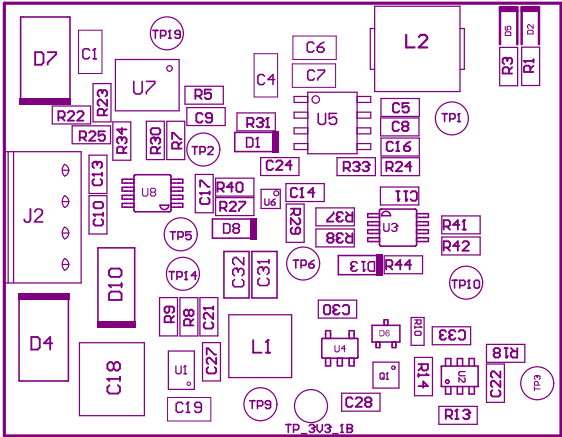


- ZZ1 ■Install label in silkscreened box after final wash. Text shall be 8 pt font. Text shall be per the Label Table in the PDF schematic.
- ZZ2 ■These assemblies are ESD sensitive, ESD precautions shall be observed.
- ZZ3 ■These assemblies must be clean and free from flux and all contaminants. Use of no clean flux is not acceptable.
- ZZ4 ■These assemblies must comply with workmanship standards IPC-A-610 Class 2, unless otherwise specified.



COMPONENTS MARKED 'DNP' SHOULD NOT BE POPULATED.
ASSEMBLY VARIANT: [No Variations]

PCB VIEWED FROM TOP SIDE	BOARD #:.PRJ_Number	REV: .PCB_Rev	SUN REV: Not In VersionControl
M5 Assembly Top	TID #:	.TID	
PLOT NAME = Top Assembly Drawing	GENERATED	: 1/21/2020 1:54:08 PM	TEXAS INSTRUMENTS



COMPONENTS MARKED 'DNP' SHOULD NOT BE POPULATED.
ASSEMBLY VARIANT: [No Variations]

PCB VIEWED FROM BOTTOM SIDE	BOARD #: .PRJ_Number	REV: .PCB_Rev	SUN REV: Not In VersionControl
M6 Assembly Bottom	TID #: .TID		
PLOT NAME = Bottom Assembly Drawing	GENERATED : 1/21/2020 1:54:09 PM		TEXAS INSTRUMENTS